

SiMEDEx specializes in Precision Silicone Extrusions

Precision and Tight Tolerance Extrusions

Single Lumen and Multi-lumen

Kink Resistant, Coil Reinforced Extrusions

Multi-layer Configurations

Braid Reinforced Extrusions

On-line Geometry Changes

MER Europe

Tussenklappen WZ 21
9649 EC
Muntendam
The Netherlands
T: +31 598 634 420
E: info@mer-europe.nl

Contact

E: tim@mer-europe.nl
E: wendy@mer-europe.nl

www.mer-europe.nl

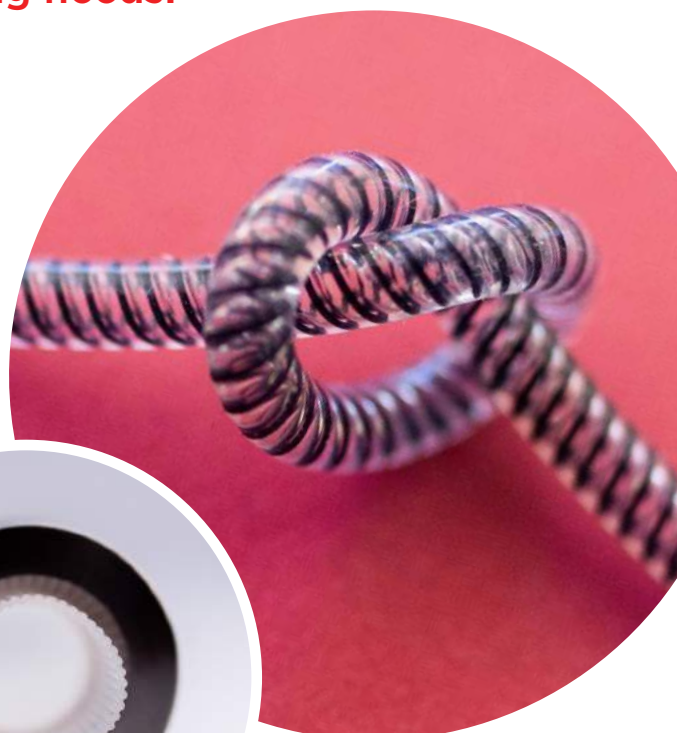
www.simedex.com



SiMEDEx is an ISO 13485 certified company offering unparalleled quality, reliability and depth of experience for your precision silicone tubing needs.

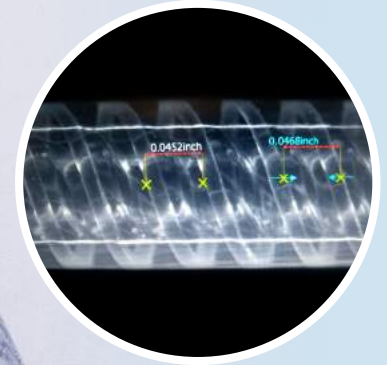
SiMEDEx was started by Paul Mazelin, a medical silicone pioneer, to service the specific needs of the medical tubing field. SiMEDEx brings together possibly the most knowledgeable and skilled team of precision silicone extrusion specialists to be found anywhere in the world. Our goal is to be your “go to” place when you need guaranteed high precision and ultra-reliable quality. We excel at doing the tough stuff that other extruders can't.

T 805 610 6444
E sales@simedex.com
www.simedex.com



Reinforced Silicone Tubing

- SiMEDEx specializes in the manufacturing of reinforced silicone tubing.
- SiMEDEx's proprietary processes are used to manufacture nylon-monofilament reinforced tubing. These kink-resistant tubes (KRT) are key components in various implantable medical devices.
- Medical tubing used at high pressures requires reinforcement. SiMEDEx produces small bore silicone tubing reinforced with a stainless-steel braid.



We offer unparalleled quality, reliability and depth of experience for your precision silicone tubing needs.

Quality Control

Next generation quality control comes online at SiMedEx with our state-of-the-art Keyence Optical Comparitor. Unsurpassed for speed and accuracy, the Keyence system helps ensure your products meet exact specifications throughout the entire run.

